



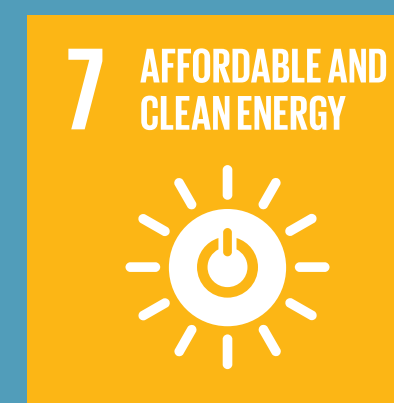
REPUBLIC OF SLOVENIA  
COURT OF AUDIT

## AUDIT REPORT

# Efficiency of managing cybersecurity risk of the ELES company critical infrastructure

**Performance audit**

Audit period: 1 January 2019 to 31 July 2020

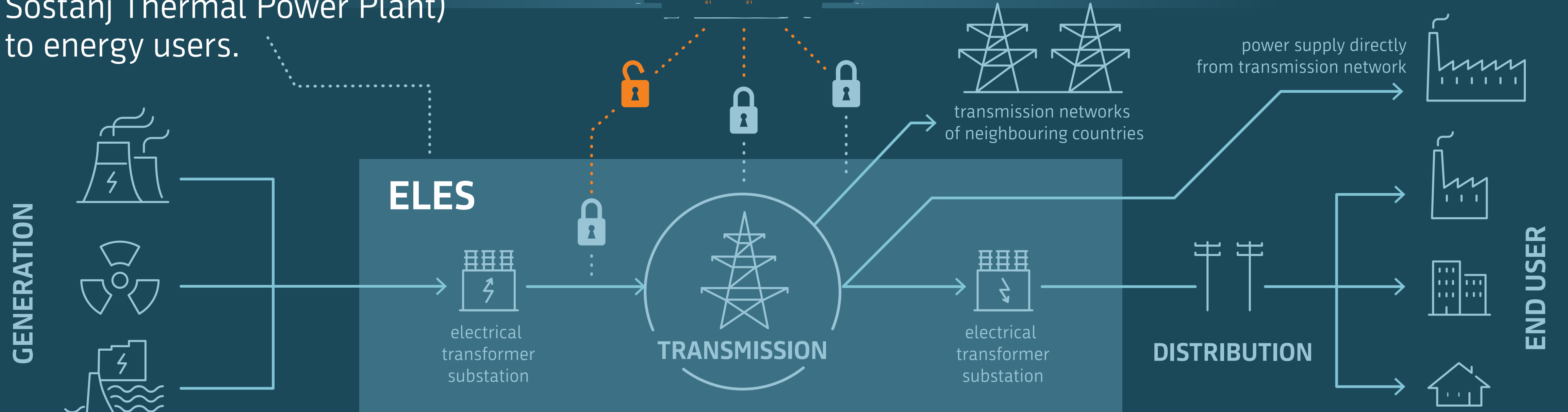


# ELES d.o.o.

provides **uninterrupted electric power transmission** from energy generators (hydroelectric power plants, Krško Nuclear Power Plant, Šoštanj Thermal Power Plant) to energy users.

# CYBERSECURITY

is the ability to protect, secure and defend cyberspace from cyber threats, incidents and attacks.



**A cyber attack may paralyse electricity distribution in Slovenia, thus cybersecurity at ELES is of crucial importance.**

# Was ELES efficient ...

in **detecting and responding** to cyber threats?

in line with the **NIST Framework for Improving Critical Infrastructure Cybersecurity**

\*NIST = National Institute of Standards and Technology

in **fulfilling legislation requirements?**

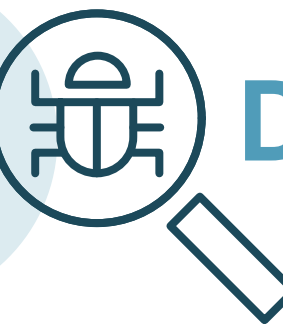
**Critical Infrastructure Act** and thereto related implementing regulations

it **devised** critical infrastructure **protection plans**

it carried **out risk assessment and monitored the condition** of critical infrastructure

it drew up **cybersecurity protection plan for facilities** and imposed critical infrastructure **protection measures**

**Detection**

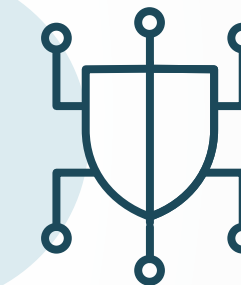


it efficiently **addressed warnings and analysed** detected events

it applied **verified detection processes** and the **roles** and responsibilities **were defined**

it continuously **improved detection processes**

**Responding**



it had **a response plan** and **provided trainings** for its employees

it used a well-functioning system for **analysing notices and provision of information**

it used a cyber security incident classification system and applied **procedures to mitigate cyber security incidents**

# OPINION OF THE COURT OF AUDIT



ELES **was efficient** in **critical infrastructure cybersecurity risk managing** in the period from 1 January 2019 to 31 July 2020.



The Court of Audit **proposed to ELES certain recommendations, some of them the company already implemented** by the time of issue of the audit report.

