



REPUBLIC OF SLOVENIA
COURT OF AUDIT

AUDIT REPORT

Efficiency of monitoring and preventing damage caused by bark beetles

Performance audit

Audited period: 1 January 2014 to 31 December 2017

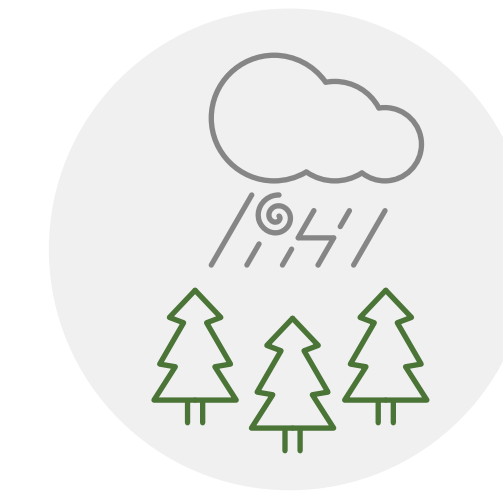
Slovenia is one of the European countries with the largest forest area



58.2%
of the area
in Slovenia
was covered
by forests in 2017



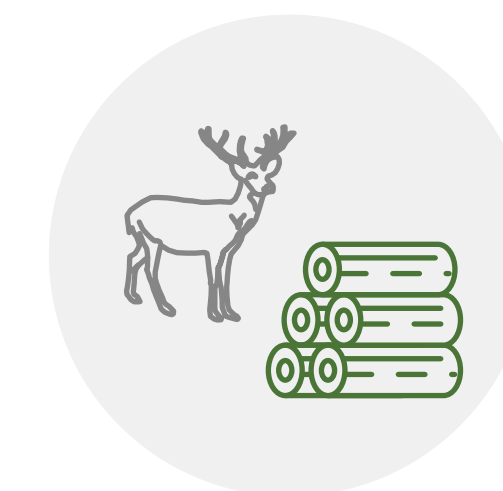
Forests represent **benefits for the owners as well as for the society** by:



ECOLOGICAL FUNCTIONS

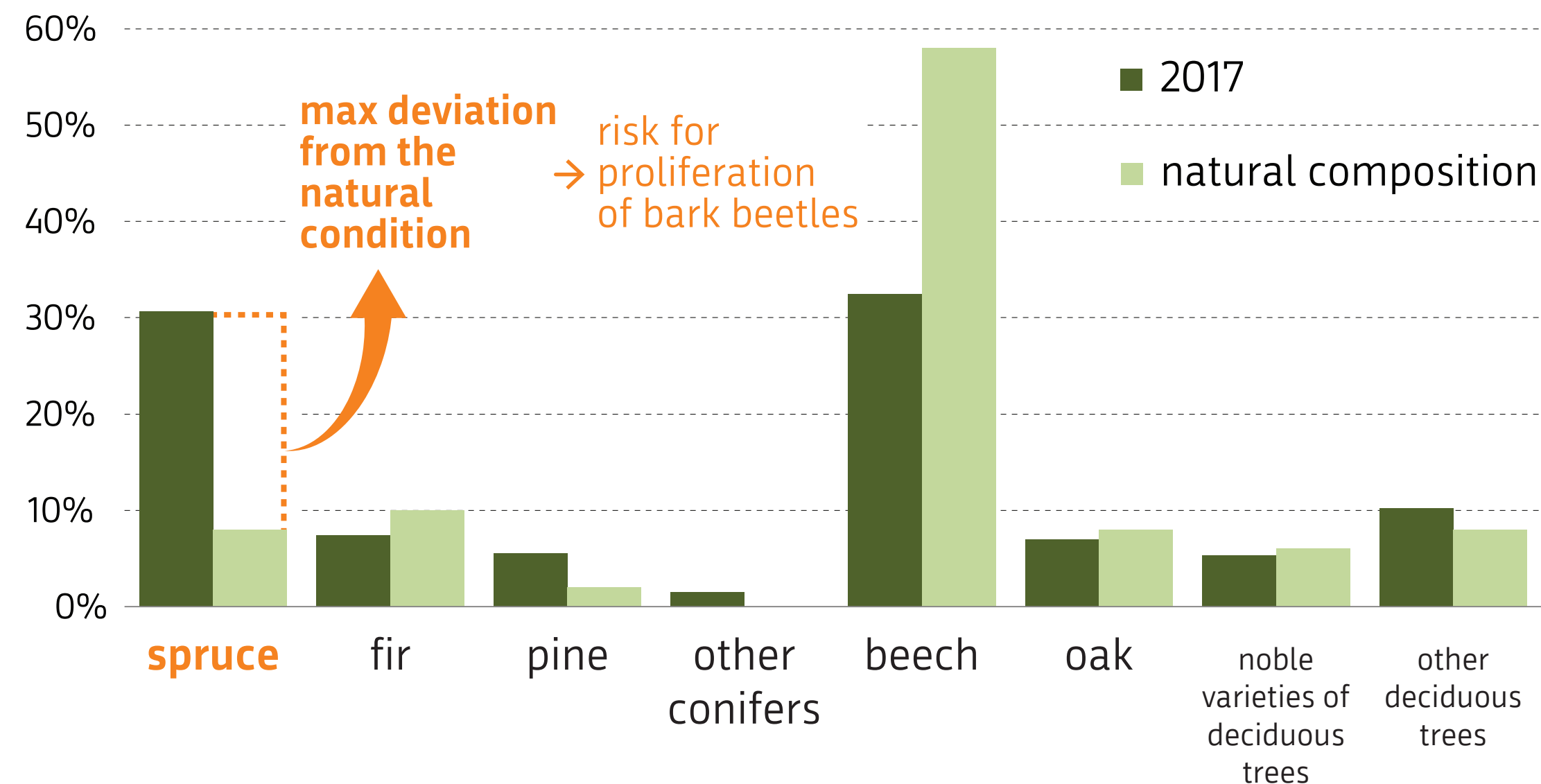


SOCIAL FUNCTIONS



PRODUCTION FUNCTIONS

Tree species composition



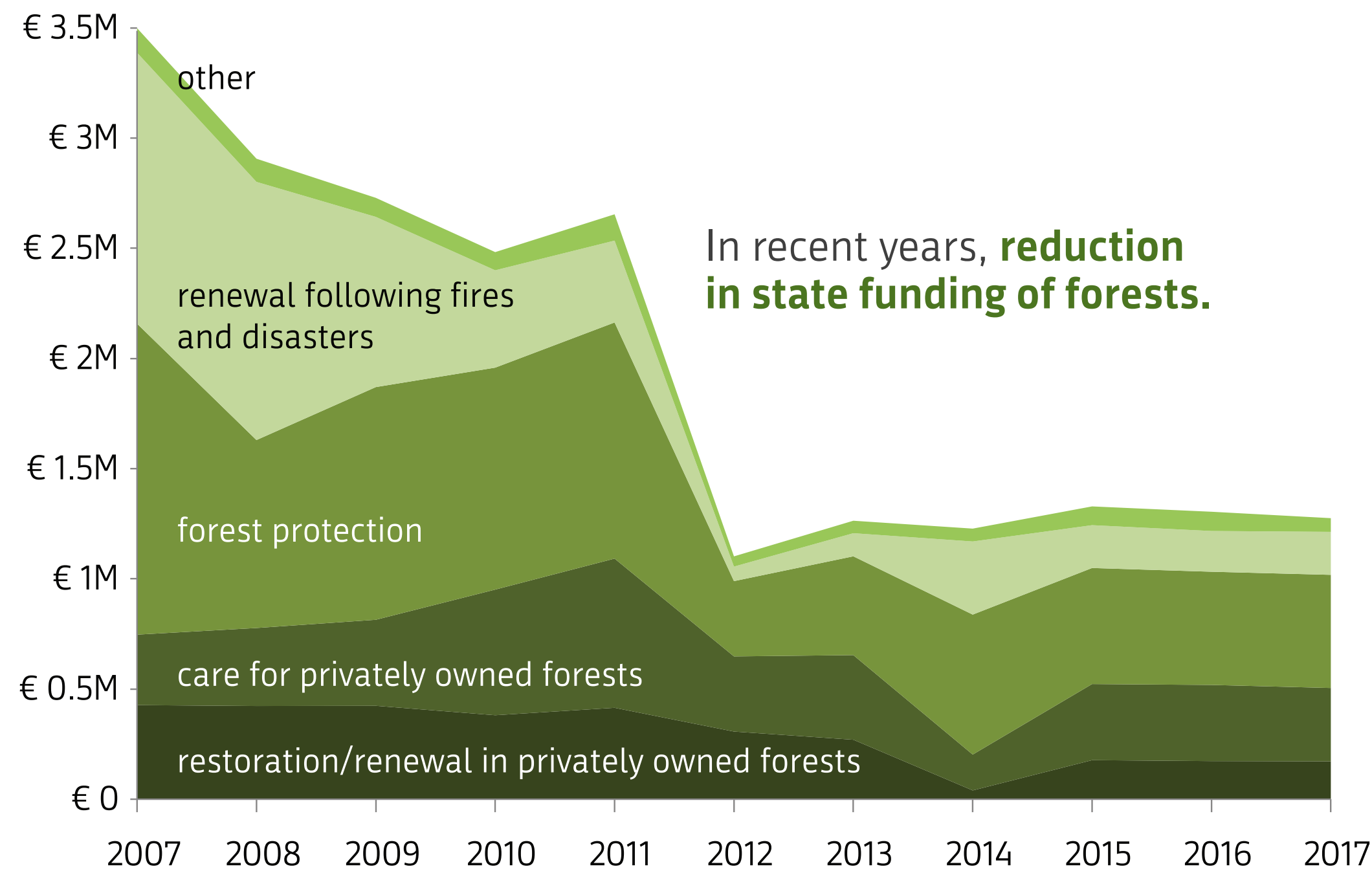
Managing forests



The State provides plans for managing forests and



(co)finances investments in forests



PLANS FOR MANAGING FORESTS

due to insufficient activity among owners of the forests and reduction in state funding **are not fully implemented.**

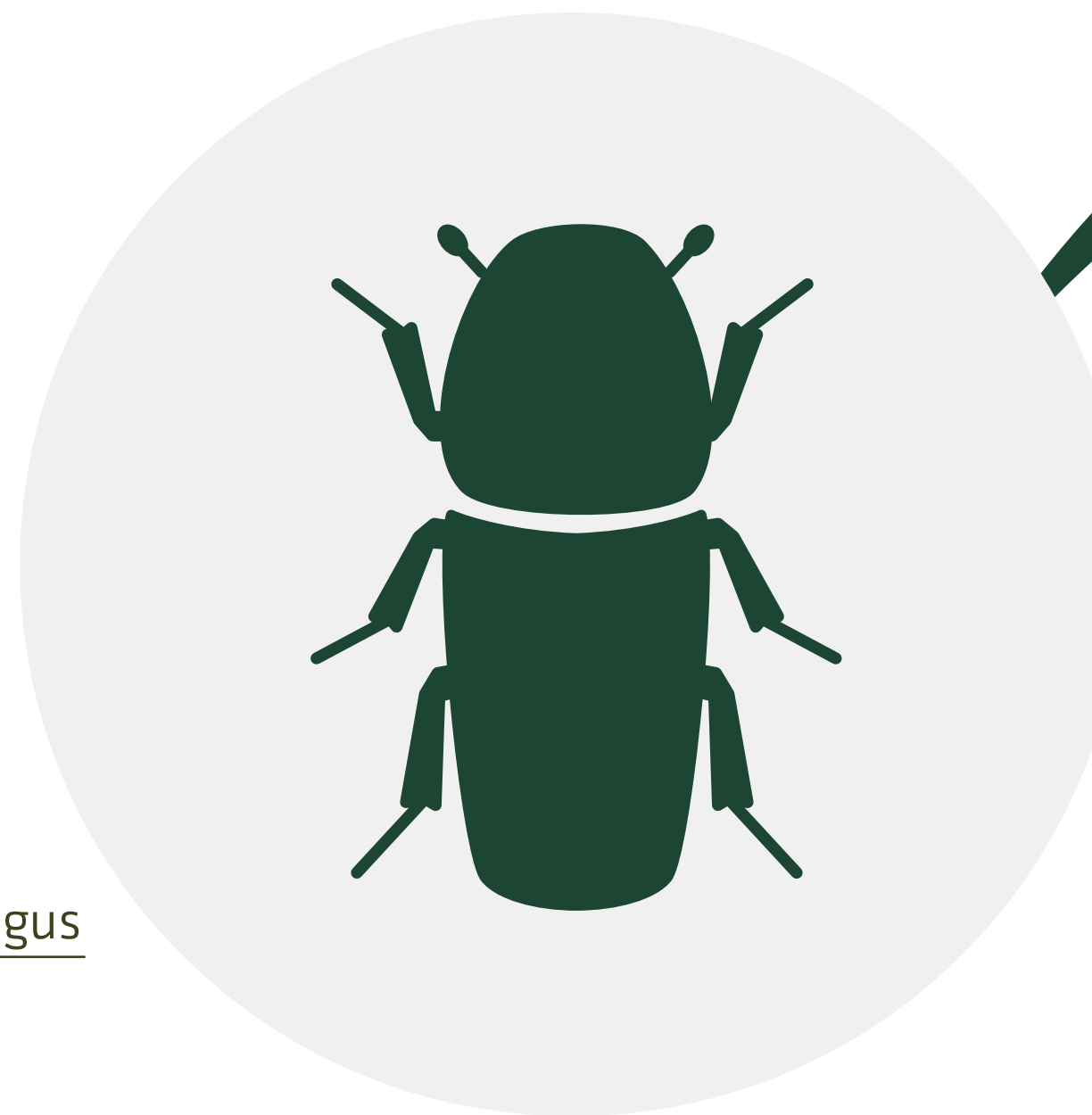
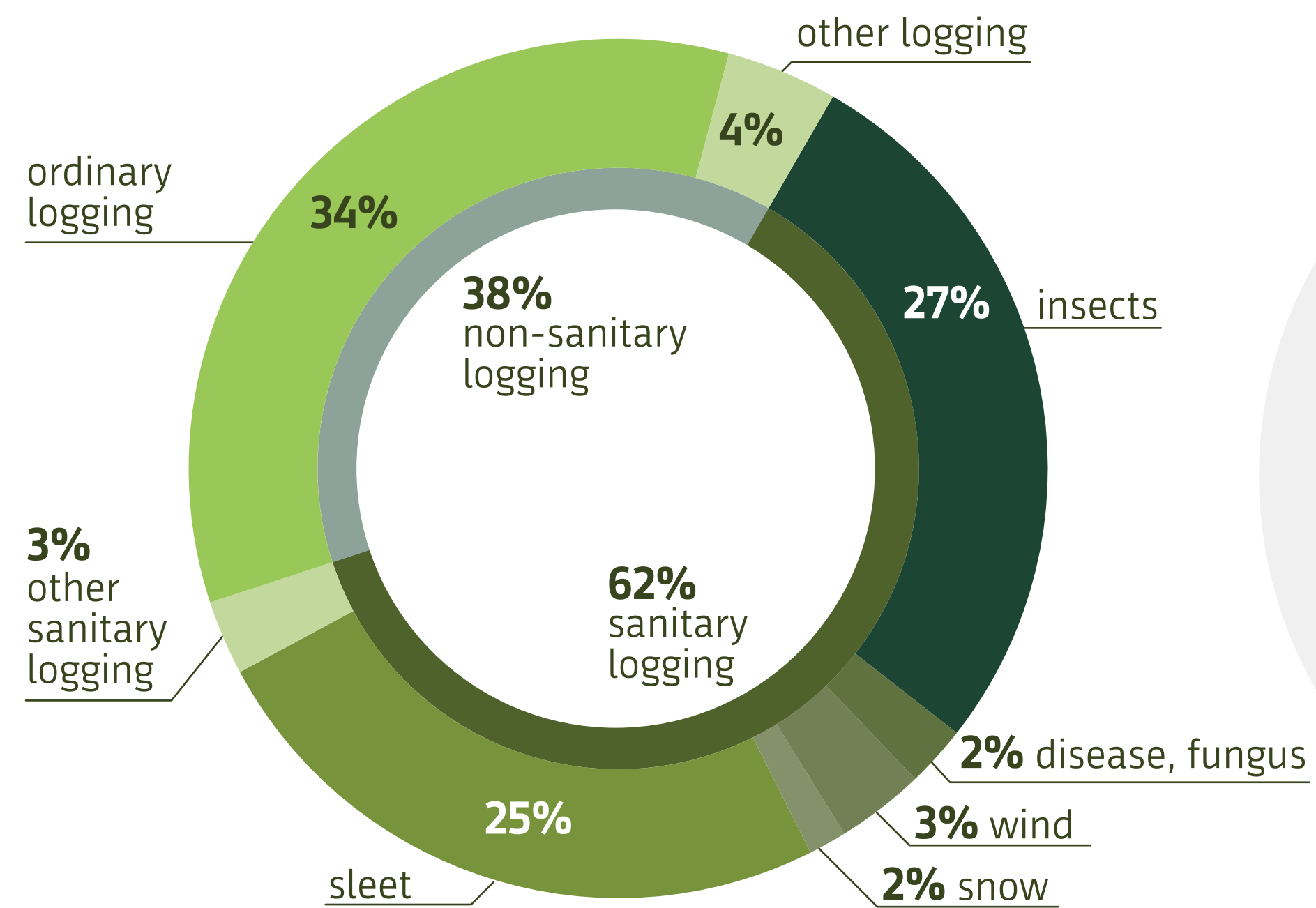
Logging, cultivation and protection were not undertaken → higher risk for proliferation of bark beetles



Bark beetles cause most damage in forests

Logging due to proliferation of bark beetles

represents **single most important cause** for sanitary logging in the period 2014-2027



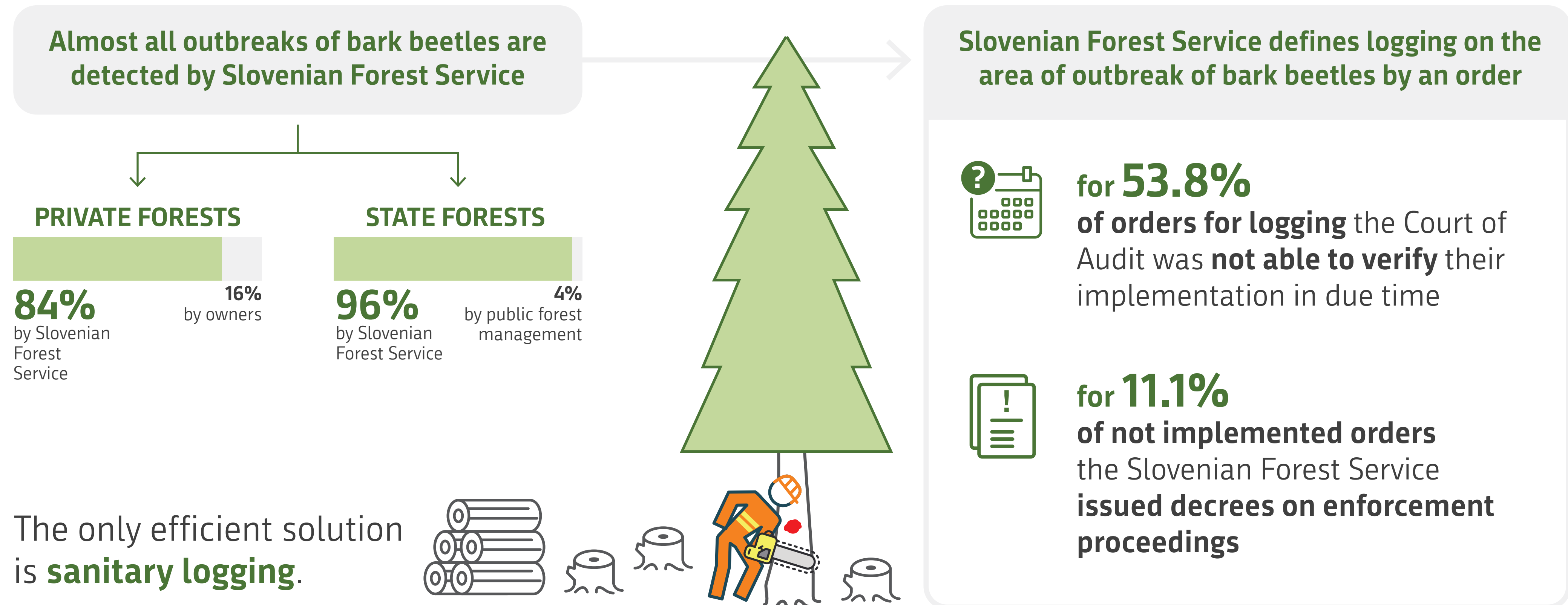
130,000 to 500,000

bark beetles are on average developed from one female in one year

€ 394 million

of damage caused due to proliferation of bark beetles in the period 2014-2020

Detecting and clearing outbreaks of bark beetles



OPINION OF THE COURT OF AUDIT

- Ministry, Slovenian Forest Service and Slovenian Forestry Institute were **despite their active role** in monitoring and preventing damage caused by proliferation of bark beetles assessed as **partially efficient**.



ALREADY UNDERTAKEN MEASURES



Slovenian Forest Service **plans reduction in proportion of spruce trees** in its middle-term tree planting needs.



Slovenian Forestry Institute develops **remote sensing methods** of outbreaks of bark beetles and **simulation models for prediction** of bark beetles proliferation.



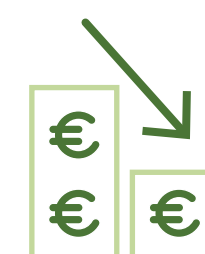
Ministry developed a **proposal of indicators** for assessing effectiveness of Slovenian Forest Service in combating bark beetles.



ISSUES REMAINING



Slovenian Forest Service and Slovenian Forestry Institute **did not reach an agreement** on tree species that shall be used for planting instead of spruce.



Funds for investments in forests **reduced on average for more than a half** since 2012, thus causing negative impacts on the scope of work undertaken by the owners of the forests.



Slovenian Forest Service **does not take measures against forest owners** who failed to implement the necessary logging defined in orders.